

MONTHLY BEES BUZZ

JUNE 2025

BEES NetWork Ltd.

(AMFI-Registered Mutual Fund Distributor)



Commercial House, 3rd Floor,
135, Canning Street, Kolkata 700001



info@bees.in



9833112294



www.bees.in

SEBI has revamped nomination rules for MFS and demat accounts.

Some major changes

- 1 Nomination has been allowed **up to 10 nominees**
- 2 Power of attorney (POA) **cannot be a nominee and cannot assign a nominee**
- 3 **Simplified transmission process** including documentation from surviving joint holder or nominee
- 4 **Reduced** paperwork and legal protection for nominees
- 5 **Nominee can act on behalf** of incapacitated investors

MONTHLY
JUNE 2025

NEWS LETTER

Dear Investors,

June reminds us of life's essential balances-our environment, families, and well-being. With World Environment Day, Father's Day, and International Yoga Day, it's the perfect time to reflect not just on where our money goes, but what it stands for.

This edition brings you ideas to invest in the planet, your loved ones, and your own **financial wellness**.

- Explore key market trends and mutual fund **category performance**
- Discover Market Pulse & Investor Perspective.
- Want to invest for a better planet? Discover the power of **ESG Funds**
- Learn how **Retirement-Oriented Funds** can secure your golden years
- Read a heartwarming **Investor Success Story** inspired by a father's love
- Unlock simple yet powerful **Financial Wisdom** for balanced investing

Market Insights

Monthly Financial Market Performance Snapshot

Particulars	Open	High	Low	Close	Change %
<u>Sensex</u>	80,300.19	82,718.14	78,968.34	81,451.01	1.43%
<u>Nifty</u>	24,311.90	25,116.25	23,935.75	24,750.70	1.80%
<u>Nasdaq</u>	17,793.14	19,389.39	17,503.01	19,113.77	7.42%*
<u>Gold</u>	\$3,288.55	\$3,438.59	\$3,120.52	\$3,289.40	0.03%
<u>Crude</u>	\$58.08	\$64.05	\$55.19	\$60.26	3.75%

Financial Performance Trends Over Various Time Horizons

Particulars	6M	1 Yr	3 Yr's	5 Yr's	10 Yr's
<u>Sensex</u>	2.07%	10.13%	13.60%	20.23%	11.34%
<u>Nifty</u>	2.57%	9.85%	14.28%	20.90%	11.37%
<u>Nasdaq</u>	-0.54%	14.21%	16.52%	15.03%	14.19%*
<u>Gold (\$)</u>	23.96%*	41.33%*	21.43%*	13.74%	10.70%
<u>Crude (\$)</u>	-12.03%	-22.18%	-19.66%	36.60%*	-0.01%

MF CATEGORY-WISE PERFORMANCE AT A GLANCE

Category	1 Yr	3 Yr's	5 Yr's	10 Yr's
Equity - Contra	9.21	22.95	29.51	15.48
Equity - Dividend Yield	6.70	21.11	27.05	13.94
Equity - ELSS	9.02	18.78	24.23	13.31
Equity - Flexi Cap	8.49	18.20	23.40	13.33
Equity - Focused	9.81	17.89	22.78	13.10
Equity - Large & Mid Cap	10.04*	20.54	26.11	14.14
Equity - Large Cap	8.79	16.45	21.41	11.84
Equity - Mid Cap	9.91	23.74*	30.22	15.67
Equity - Multi Cap	9.41	21.78	27.75	14.75
Equity - Small cap	9.87	23.43	35.42*	17.00*
Equity - Value	7.51	21.82	27.54	14.34

* Source: Investing.com/wsj.com/masterstrokeonline.com

* All Sectoral, Thematic, Index & ETF Funds excluded from the above list. Returns are not guaranteed.

* Monthly Financial Market Performance Snapshot Data Period - 01/05/2025 to 31/05/2025



Pro Tip: Don't time the market-spend time in the market!

Market Pulse & Investor Perspective

Sensex Monthly Trend - May 2025



Key News That Moved the Markets in May

Domestic Developments:

- India witnessed a record FPI inflow of ₹19,860 crore in May 2025
- May saw \$5.5 billion in block trades, the highest monthly total in nearly a year

Global Highlights:

- Federal reserve signals potential delay in interest rate cuts
- Crude oil prices hit **four-year low** amid oversupply concerns

What It Means for Long-Term Investors

- **Strong FPI inflows-** and block deals reflect growing confidence in India's long-term growth.
- **Volatility creates opportunity-** SIPs benefit from lower NAVs during short-term swings.
- **Stick to your plan-** if your goals are 5-10 years away, short-term noise doesn't matter.
- **Review, don't react-** rebalance your portfolio only if it's off-track, not because of headlines.

Short-term headlines make news. Long-term consistency builds wealth.
Keep your SIPs going and let time reward your patience.



Investor Education

Topic: ESG Funds - Investing That Reflects Your Values

In a world becoming more eco-aware, many investors are now looking beyond just returns. They want their money to support businesses that are **good for the planet, people, and the future.**

That's where ESG Funds come in

What are ESG Funds?

These mutual funds invest in companies that meet standards across:

- **E-Environmental:** Pollution control, clean energy, waste management
- **S-Social:** Employee welfare, diversity, community responsibility
- **G-Governance:** Ethical management, transparency, no frauds or scams

Why Are They Gaining Popularity?

Aligned with global trends of eco-friendly investing.

Encourages responsible business behavior.

Competitive past returns.

Track Record:

Category	Plan	Returns (%)					
		3 M	6 M	1 Yr	3 Yrs	5 Yrs	10 Yrs
Equity Thematic - ESG Fund	Regular	12.92	-0.82	10.00	16.39	20.10	12.17

Performance Date - 31/05/2025



With ESG Funds, you're not just growing wealth-you're investing in a better world.

Understanding Mutual Fund Categories:

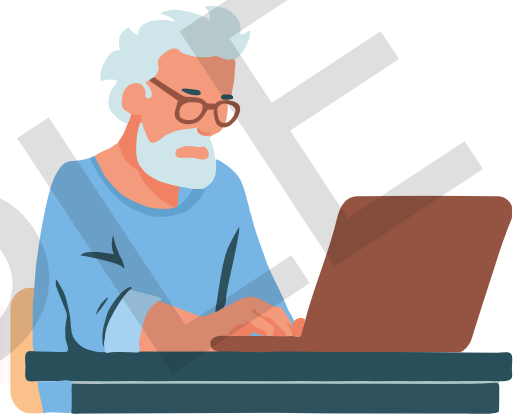
Focus on: Retirement-Oriented Funds

What Are They?

These are mutual funds designed to help you plan for a secure retirement.

They usually offer:

- Long-term lock-in
- Balanced allocation (Equity + Debt)
- Systematic withdrawal options



Who Should Invest?

- Working professionals thinking long-term
- Anyone who wants peaceful golden years without financial stress

Track Record:

Category	Plan	Returns (%)					
		3 M	6 M	1 Yr	3 Yr's	5 Yr's	10 Yr's
Solution Oriented-Retirement Fund-Debt	Regular	6.00	3.43	8.94	9.94	8.89	8.23
Solution Oriented-Retirement Fund-Equity	Regular	13.20	0.41	9.74	17.66	20.78	11.87

Returns as of 30/05/2025



Your retirement deserves a plan. Start early, relax later!

Case Study/Investor Story

One SIP, A Lifetime of Dreams

It began with a dream-and a quiet promise.

When Riya was just 6, she walked up to her father, clutching a toy syringe and a stethoscope, and said with a sparkle in her eyes, "One day, **I'll become a doctor and give injections to everyone!**"

Mr. Kapoor smiled, said nothing, and that very night, spoke to his friend, a **Mutual Fund Distributor**. Together, they crafted a preparation. Mr. Kapoor opened a SIP, modest but meaningful, to build a fund for Riya's future.

For the next 12 years, he stayed committed-through job changes, rising expenses, and even a brief health scare. He never missed a single instalment.

Then came the moment of truth-Riya secured a full scholarship to a top international medical university.

With misty eyes and a full heart, Mr. Kapoor looked at the education fund he had built so carefully... and smiled.

"Let's not stop here," he said.

Today, he continues that same SIP-as long as he earns-so that when the time comes, he can support Riya in starting her own clinic or medical venture, debt-free and full of confidence.



A SIP started with love can fund more than dreams-it can fund freedom, confidence, and a future without limits.

Financial Wisdom for Smart Investing

Topic: Financial Wellness - The Yoga of Wealth

Like yoga balances body and mind, a healthy portfolio balances growth and safety.
Your 5-Step Wealth Wellness Routine:



1 **Stretch Your Income**
 Budget smartly

2 **Breathe Through SIPs**
 Invest calmly and regularly

3 **Balance Asset Classes**
 Equity, debt, gold

4 **Meditate Regularly**
 Review your financial goals

5 **Relax with Insurance**
 Secure your peace of mind



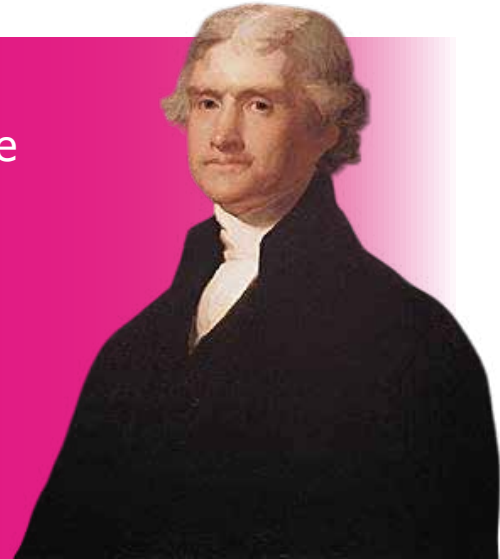
Financial fitness is as vital as physical fitness.
 Align your money with your life goals.

Contact and Closing

Quote of the Month

Never spend your money before you have earned it.

- Thomas Jefferson



June celebrates harmony between self, family, and the world. Let's use this opportunity to realign our financial journey with what truly matters -**purpose, planning, and peace of mind.**





THANK YOU

BEES NetWork Ltd.

(AMFI-Registered Mutual Fund Distributor)



BHARAT BAGLA



Commercial House, 3rd Floor,
135, Canning Street, Kolkata 700001



info@bees.in



9833112294



www.bees.in

Join our WhatsApp Community!



Scan the QR code below to connect with us and stay updated:
We look forward to having you!

Disclaimer: This report has been prepared based on data available to us and we have taken all precautions so that there are no errors and lapses. However, we do not assume any liability for actions taken, based on this report. Past performance may or may not be sustained in the future. Mutual fund investments are subject to market risks, read all scheme related documents carefully. Contact us for scheme-specific risk. The 'Investor Success Story' narrative involves creative liberties taken for storytelling purposes. It does not reflect real events or individuals.

* Report as of 01/06/2025